

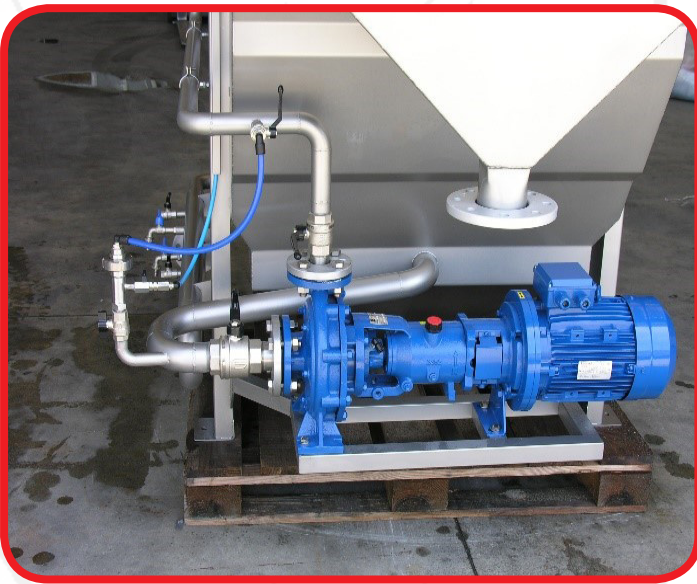
**SALVATORE
ROBUSCHI
POMPE PARMA**

Daf Unit

RG - Ecology and Environment

Wastewater Treatment

Conventional wastewater treatment consists of a combination of physical, chemical, and biological processes and operations to remove solids, organic matter and, sometimes, nutrients from wastewater. General terms used to describe different degrees of treatment, in order to increase the treatment level, are preliminary, primary, secondary, and tertiary and/or advanced wastewater treatment.



Application : Daf Unit

PUMP: RGL 50-20A 2C11 E181 3
PERFORMANCE: Flow 40 m³/h – head 55 m
LIQUID: water with 10% of air

DAF technology refers to the method of liquid-solid separation by air introduction. The fat and grease along with light solids are moved to the surface creating a sludge blanket. Thus, it can be continuously removed via scum scraping.

Our RG, thanks to the semi-open impeller and special seal arrangement, can work with a solution of water and air up to 10%. Air drum for saturating the pressurized effluent water with air is not required.

RG SERIES

Centrifugal pumps built according to ISO 2858/ISO 5199 norms.
Impeller type: **semi-open with wear plate and external adjustment.**
Discharge sizes: **from DN 32 to DN 125.**
Maximum working pressure: **16 bar**
Flow rate: **up to 300 m³ /hr.**
Differential head: **up to 95 m.**
High hydraulic efficiencies and low NPSH value (investment casting impellers).

